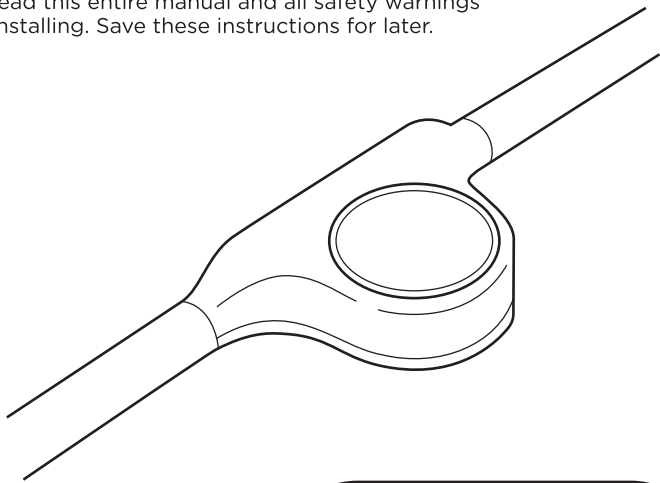


Indoor Accent

Spectrum™ Wall Light Extension Strand

Congrats on expanding your Enbrighten VIBE Spectrum Wall Lights with this extension strand! These dynamic LEDs showcase your lifestyle with endless customizations and smart controls using the free Enbrighten app.

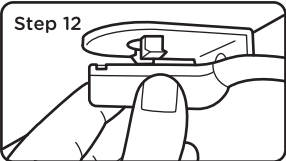
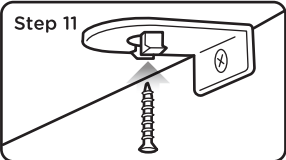
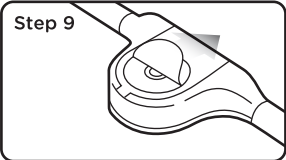
Please read this entire manual and all safety warnings before installing. Save these instructions for later.



Extension strand only works with
Enbrighten VIBE Spectrum Wall Lights
(Model# 85832)

Model: 85839

- Peel the paper backing from the tape and firmly press the combined LED puck and bracket onto the mounting surface.
- Use a flathead screwdriver to gently pop the LED puck out of the bracket.
- Use a #1 Phillips-head screwdriver to secure the bracket with the included mounting screw (C).
- Reattach the LED puck to the secured mounting bracket.
- Repeat the process for each LED puck.
- Plug the power cord into a 120V/60Hz outlet.



WARRANTY INFORMATION

IMPORTANT — PLEASE READ

Refer to the manual or visit www.enbrightenme.com/warranty for limitations and restrictions on warranties and the product registration information.

This Jasco product has a 5-year limited replacement warranty.

Electrical Ratings

Electrical Ratings Input: 120VAC 60Hz

Model: 85839

Length: 22ft.

Total Wattage: 9W

Adapter Power Rating: 24VDC

Maximum Length: Link up to four light strands for a total of 48 puck lights.

Thank you for your purchase!

Instructions made easy



Read instructions or watch an easy-to-follow video.

Scan code or visit enbrightenme.com/85839i



Discover more innovative lighting at www.enbrightenme.com.

Register your product



Receive exclusive deals and register your product.

Scan code or visit byjasco.com/deals.



Like our product?
Leave a review on your favorite retailer website or amazon.com.



Having problems?
Let us know how we can help.

Call 1-800-225-0653, Monday-Friday

FCC STATEMENT

Suppliers Declaration of Conformity | Model #: 85839 | Jasco Products Co., 10 E. Memorial Rd., Oklahoma City, OK 73114, www.byjasco.com

This device complies with Part 15 of the FCC and Industry Canada license-exempt RSS standards. Operation is subject to the following two conditions: (1) this device may not cause harmful interference, and (2) this device must accept any interference received, including interference that may cause undesired operation.

FCC NOTE: The manufacturer is not responsible for any radio or TV interference caused by unauthorized modifications to this equipment. Such modifications could void the user's authority to operate the equipment.

NOTE: This equipment has been tested and found to comply with the limits for a Class B digital device, pursuant to Part 15 of the FCC Rules. These limits are designed to provide reasonable protection against harmful interference in a residential installation. This equipment generates, uses and can radiate radio frequency energy and, if not installed and used in accordance with the instructions, may cause harmful interference to radio communications. However, there is no guarantee interference will not occur in a particular installation. If this equipment does cause harmful interference to radio or television reception, which can be determined by turning the equipment off and on, the user is encouraged to try to correct the interference by one or more of the following measures:

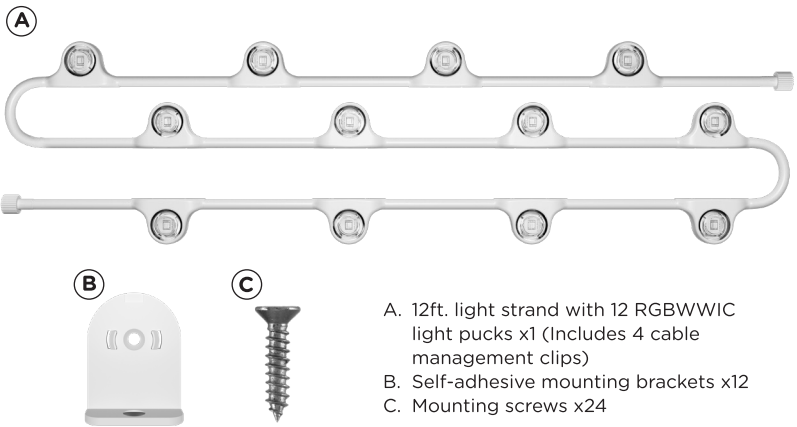
- Reorient or relocate the receiving antenna.
- Increase the separation between the equipment and receiver.
- Connect the equipment into an outlet on a circuit different from that to which the receiver is connected.
- Consult the dealer or an experienced radio/TV technician for help.

Important note: To comply with the FCC RF exposure compliance requirements, no change to the antenna or the device is permitted. Any change to the antenna or the device could result in the device exceeding the RF exposure requirements and void user's authority to operate the device.

CAN ICES-3(B)/NMB-3(B)

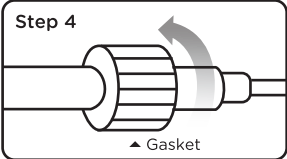


INSIDE THE BOX



INSTALLATION

- Unplug the power supply of your existing light strands.
 - Uncoil the new light strand (A).
 - Loosen the gasket on the end of the strand and plug in the new set of lights.
 - Screw on the gasket to secure the connection.
 - Plug the power cord into a 120V/60Hz power outlet.
 - To test the lights, press the pairing button on the in-line controller a few times to ensure all the LEDs work.
 - Unplug the power supply.
 - Attach each bracket (B) to the back of the LED pucks — press until they click into place.
- IMPORTANT: Steps 9-13 should be done one LED puck at a time.**



⚠ WARNING

KEEP PACKAGING BAGS AWAY FROM BABIES AND CHILDREN. DO NOT USE IN CRIBS, BEDS, CARRIAGES, OR PLAYPENS. THE THIN FILM MAY CLING TO NOSE AND MOUTH AND PREVENT BREATHING.

⚠ WARNING

RISK OF ELECTRIC SHOCK

- RECEPTACLE OUTLETS USED FOR POWERING LIGHTS SHALL COMPLY WITH ALL NATIONAL AND LOCAL ELECTRICAL CODES. CONSULT LOCAL ELECTRICIAN IF UNSURE OF COMPLIANCE REQUIREMENTS.
- DO NOT SUBMERSE.
- DO NOT USE AROUND AQUARIUMS.
- LIGHTS HAVE NO SERVICEABLE PARTS.
- DO NOT USE WITH EXTENSION CORD NEAR WATER OR WHERE WATER MAY ACCUMULATE.
- KEEP LAMPS AT LEAST 16FT. (4.8M) FROM POOLS AND SPAS.
- KEEP PLUGS AND RECEPTACLES DRY.
- AVOID DAMAGE TO THE CORDS AND LAMP ASSEMBLIES DURING THE INSTALLATION.
- DO NOT INSTALL IN LOCATIONS WHERE LIGHTS CAN BE STEPPED ON.
- ENSURE LIGHTS ARE UNPLUGGED FROM POWER DURING INSTALLATION.
- CHILDREN SHOULD NOT BE ALLOWED TO PLAY WITH LIGHTS.
- UL RECOMMENDS TESTING RECEPTACLES EVERY MONTH TO ENSURE PROPER OPERATION.

RISK OF FIRE

- WALL LIGHTS ARE DESIGNED TO BE LINKED BY USING THEIR ELECTRICAL PLUGS AND RECEPTACLES TO A MAXIMUM OF FOUR STRANDS.
- WALL LIGHT INTERCONNECTING RECEPTACLES ARE INTENDED ONLY FOR THE LINKING OF COMPATIBLE LIGHT STRANDS. DO NOT USE WALL LIGHT RECEPTACLES FOR ANY OTHER ELECTRICAL PURPOSE.
- NOT INTENDED FOR INSTALLATION OF POWER SUPPLY, LED PUCK OR CORDS IN CEILINGS, SOFFITS, CABINETS, ATTICS OR OTHER ENCLOSED SPACES.

PATENTS/PATENTS PENDING
WWW.BYJASCO.COM/PATENTS

MADE IN THAILAND

Distributed by Jasco Products Company LLC,
10 E. Memorial Rd., Oklahoma City, OK 73114.

This Jasco product has a 5-year limited warranty. For warranty details, visit www.enbrightenme.com/warranty.

Questions? Contact our U.S.-based Consumer Care at 1-800-225-0653, M-F.

www.enbrightenme.com

©JASCO 2025 | 85839 | 12//24 v1

