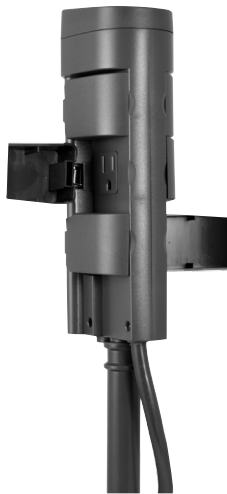


# Outdoor Wi-Fi Smart Yard Stake

## enbrighten®



### Specifications

**Power:** 120VAC, 60Hz

**Signal Frequency:** 2.4GHz

**Maximum Load (Total All Outlets):** 1875W (15A) resistive, 1/3HP motor

**Operating Temperature:** -13-104 °F (-25-40 °C)

**Operating Humidity:** 0-95%

**Warranty:** 5-year limited product warranty

### Design Features

- Heavy-Duty Design - 6 simultaneously controlled outlets with weather-resistant covers withstand the elements while a durable stake and high-quality cord allow secure placement.
- 2.4GHz Wi-Fi Compatible - Connects to 2.4GHz networks of single-, dual- and tri-band routers through effortless pairing options for use with the latest home Wi-Fi equipment.
- Voice Control - No hub required for voice commands through Amazon Alexa and Google Assistant.
- Easy-to-Use App - Versatile Enbrighten app available in the Apple App Store and Google Play simplifies network connection for hassle-free mobile operation of lights, fans and more.
- Simple Setup - Schedules and automations support full customization based on times, presets, weather, location and other factors.

**Related Products - Enbrighten Smart Controls**



**51253**  
Dual Plug-in  
Wi-Fi Smart  
Switch



**51511**  
Mini Plug-In  
Wi-Fi Smart  
Switch



**51251**  
Dual Outdoor  
Wi-Fi Smart  
Switch

**Certifications & Compliances**



Compliances, specifications and availability are subject to change without notice

Distributed by Jasco Products Company LLC  
10 E. Memorial Rd., Oklahoma City, OK 73114

©Jasco 2020