

Thank you for your purchase

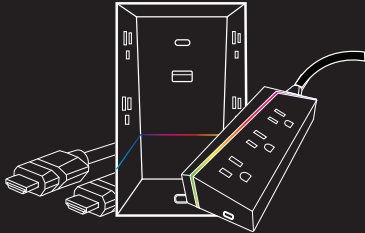
EXCLUSIVE DEALS

For deals, to register
your purchase and
to tell us how we're
doing, simply scan
the code or visit
byjasco.com/deals.



EXPLORE MORE TITAN PRODUCTS

Surge protectors, HDMI cables and
more at titangamingtech.com



T I T A N

DESIGNED IN THE USA

MADE IN VIETNAM

Titan is a trademark of Jasco Products
Company and is under license by Jasco LLC,
10 E. Memorial Rd., Oklahoma City,
OK 73114.

This Jasco product comes with a limited-
lifetime warranty. Visit www.byjasco.com for
warranty details.

Questions? Contact our U.S.-based
Consumer Care at 1-800-654-8483 between
7AM-8PM, M-F, Central Time.



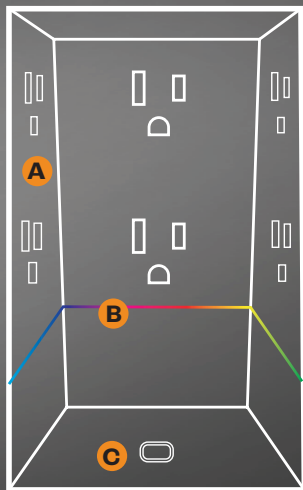
Like our product?
Leave a review on your
favorite retailer website
or amazon.com.



Having problems?
Let us know how we can
help. Call 1-800-654-8483
between 7AM-8PM, M-F,
Central Time.

SURGE TAP

- A. Grounded Outlets
- B. Color-Changing LED
- C. Capacitive-touch button



INSTRUCTIONS

- 1 Plug your Titan surge tap into a standard grounding duplex wall receptacle. Fully insert blades and cover both outlets.
- 2 The surge tap is now powered and protected.
- 3 Turn off gaming equipment before plugging into the surge tap. Do not use extension cords to connect equipment to the surge tap.
- 4 Gaming equipment can now be turned on.
- 5 Firmly hold surge tap against wall when removing plugs to prevent it from pulling loose.
- 6 Press the capacitive-touch button to select one of the LED light options or set it to cycle through the full spectrum of hues. Hold button for two seconds to turn OFF. From the OFF position, hold the button to brighten or dim the selected color. The capacitive-touch button will always bring up the last saved setting.



See how it works

Scan code or visit
byjasco.com/573651

Surge Protector – Limited-lifetime warranty

Jasco Products Company warrants this surge protector to be free of defects in design, assembly, materials and workmanship for the life* of the surge protector. If such a defect should arise during the life of the surge protector, Jasco will, at its option, either repair or replace the surge protector without charge. This warranty does not cover damage caused by accident, misuse or alterations to the surge protector, or natural disasters of any kind.

*This surge protector, like all surge protectors, has a finite lifespan. Even under normal circumstances and in the absence of defects, the product's life will expire when the surge protector's component capacity has been exceeded, thereby ceasing to provide protection from surges. In this event, the limited-lifetime warranty is no longer valid, and the surge protector should be replaced.

Warranty replacement procedure

1. Call our U.S.-based Consumer Care at 1-800-654-8483 to get a Return Authorization Number (RA#), shipping instructions and a prepaid return address label.
2. After you have received the prepaid return address label, return the Jasco surge protector, freight prepaid, to Jasco. Surge protectors returned to Jasco must have an RA# included in the mailing address to be accepted.
3. The original purchaser will be asked to send the surge protector, a copy of the sales receipt for the product, his/her name, address, phone number and a description of the problem.

Connected Equipment Warranty Equipment Replacement Guarantee for Surge Model: 57365

Maximum Warranty Amount: \$100,000 (USD)

Please visit byjasco.com/cew for more information on the Connected Equipment Warranty.

NOTE: This device is not a lightning arrestor, so it will not afford protection when lightning strikes nearby power line, the house, service entrance or antenna. The warranty is void if a power disturbance damages your equipment through the coax, phone or network lines.

⚠ CAUTION

TO REDUCE THE RISK OF FIRE OR ELECTRIC SHOCK, DO NOT USE THIS DEVICE WITH A RECEPTACLE IN WHICH THE SLOT OPENINGS DO NOT ALIGN WITH THE BLADES. NOT FOR USE WITH GROUND-FAULT CIRCUIT-INTERRUPTER RECEPTACLES OR RECEPTACLES WITH INDICATOR LIGHTS OR CONTROLS.

! WARNING

RISK OF ELECTRIC SHOCK

- DO NOT USE IN WET LOCATIONS
- KEEP CHILDREN AWAY
- USE INDOORS ONLY
- FULLY INSERT PLUG

RISK OF FIRE

- DO NOT EXCEED ELECTRICAL RATINGS

NOT FOR USE WITH

- AQUARIUMS OR OTHER WATER-RELATED PRODUCTS
- GENERATORS AND POWER INVERTERS
- MEDICAL LIFE-SUPPORT PRODUCTS

SPECIFICATIONS:

Electrical Rating	120VAC
Joule Rating	560
Maximum Amps	15
VPR	500V
Maximum Watts	1800

