

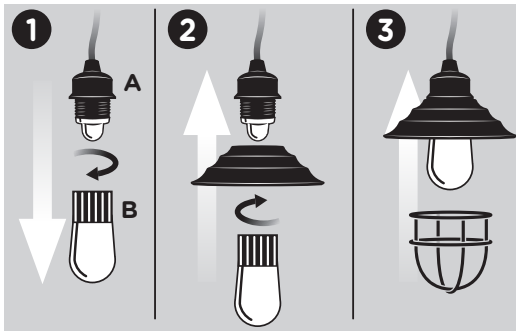
enbrighten[®] café

Version 1-DA
10/11/16

In order to ensure proper installation, please follow each step below:

SETUP

- 1 - Firmly grasp base (A) of light module and unscrew lens collar (B) counter clockwise to remove.
- 2 - Place the hood of the shade onto the light module and screw in the lens collar clockwise to replace, securing the shade in place.
- 3 - Snap the cage onto the hood using the attachment points.
- 4 - Repeat for each shade.



NOTE: Decorative shades are compatible with Enbrighten Café and Enbrighten Café Vintage Series

Simplify your Café Light experience by automating your on and off times.

We recommend the following models, available at your local retailer or at www.cafelights.com:

myTouchSmart Outdoor
Timer (Plug-in)
Model #26898



The myTouchSmart Plug-in Timer is the easiest to set timer on the market. Simply select your time and go.

myTouchSmart
Timer (In-wall)
Model #26893



The myTouchSmart In-wall Timer provides easy-set controls if your receptacle is controlled by a switch.

GE Bluetooth Outdoor
Smart Switch (Plug-in)
Model #13868



Wirelessly schedule and control outside lights or other devices from your smartphone or tablet.

GE Bluetooth
Smart Switch (In-wall)
Model #13869



The GE Bluetooth In-wall Smart Switch provides the same Bluetooth control if your receptacle is controlled by a switch.

BY
JASCO®

MADE IN CHINA

Distributed by Jasco Products Company LLC,
10 E. Memorial Rd., Oklahoma City, OK 73114.

This Jasco product comes with a limited-lifetime warranty.
Visit www.byjasco.com for warranty details and product registration.

Questions? Contact us at 1-800-654-8483 between 7:00AM—8:00PM CST.