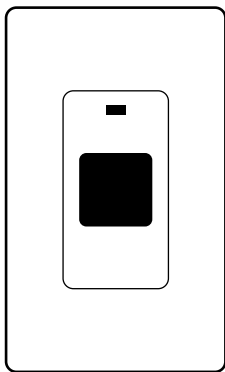




Wireless Alarm System

# Panic Button

User's Manual



Control all sensors, accessories  
and remote transmitters from  
one location

## Table of Contents

Important Safeguards	4
Introduction	5
Activating the Battery	6
Assigning a Panic Button to a Device Location	6
Placement of the Panic Button	7
Mounting the Panic Button onto a Wall (using double sided tape strips)	7
Mounting the Panic Button onto a Wall (using screws/wall anchors)	8
Removing the Top Cover from the Mounting Plate	9
Attaching the Top Cover to the Mounting Plate	9
Low Battery Indication	9
Operating the Panic Button	9
To Erase a Panic Button from a Control Center	10
To Replace a Panic Button	10
To Replace the Battery	11
FCC Warning	12
Battery Warnings	13
Panic Button's F.A.Q's	13

**Before connecting or operating the Panic Button, please read these instructions carefully and save this manual for future reference.**

## **Congratulations**

The GE Choice Alert™ Wireless Alarm System is one of the most affordable and expandable wireless alarm systems available. You'll discover that the system offers many features typically found in custom installed Alarm systems. The Choice Alert system is reliable and easy-to-use. With Choice Alert you can select from a line of Sensors, Accessories and Remote Transmitters; start small and expand as you need, or create a system that meets all your needs.

The Choice Alert System is protected by Priority Code Selection technology which provides increased security and trouble-free wireless connections. It also guarantees the Control Center will only respond to signals from your Sensors and Remote transmitters in and around your home, and prevents anyone from tampering with your system.

This user manual explains in simple steps how to install, use and care for your new Choice Alert Panic Button.

**If you have any questions or would like additional information please visit our web site [www.jascopeproducts.com](http://www.jascopeproducts.com), or contact our Tech Support at 1-800-654-8483.**

## Important safeguards

### PreCautions

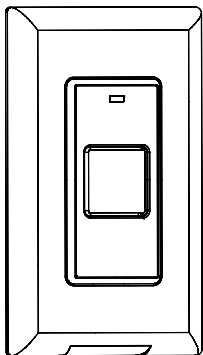
1. Do not attempt to disassemble the Panic Button, unless described in the user's manual. There are no user serviceable parts.
2. Handle with Care – Avoid striking or shaking. Improper use or storage could damage the Panic Button. Modifying or tampering the device or its internal components can cause a malfunction and void the Panic Button's warranty.
3. If you feel the Panic Button or any part of the Choice Alert system is not operating correctly or as described, please contact Tech Support for assistance **(1-800-654-8483)**.

# Introduction

The Panic Button is designed to be used indoors. When mounted properly in bedrooms, entrances, living rooms, family rooms or workshops it offers you a quick way to activate your alarm. When the button is pressed, it will transmit a signal to the Control Center to activate the Alarm Siren.

## Parts Check List

Identify all the parts before proceeding.



Panic Button

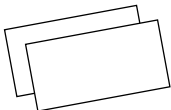
2 - Screws



2 - Plastic anchors



2- Double sided adhesive tape



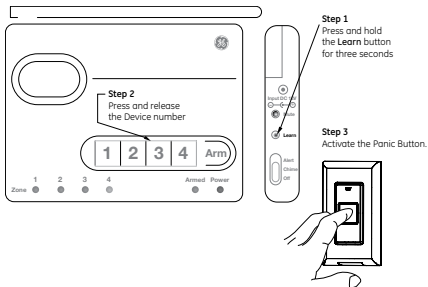
## Activating the Battery

The Panic Button is packaged with the battery installed, but not activated. To activate the battery, you must remove the yellow battery isolation strip. Locate the yellow battery isolation strip on the side edge; pull to remove. When removed, the Panic Button will be active.

## Assigning a Panic Button to a Device Location

The Control Center is designed to store up to four Remote transmitters, such as the Panic Button. In order to ensure that the Panic Button will operate only with your Control Center, it must be assigned to one of the four device locations in the Control Center.

**1.** Press and hold the **Learn** button on the Control Center. You will hear a short beep, followed shortly by a long continuous beep. Release the **Learn** button.



**2.** On the Control Center, press and release one of the device numbers (1,2,3 or 4) that you want to assign the Panic Button. The LED for that device number will begin to flash.

**3.** Press and hold the Panic Button. The Control Center will sound a long beep and the LED will stop flashing. Release the Panic Button. This confirms the Panic Button has been assigned to the selected device number.

### **Placement of the Panic button.**

The Panic Button is designed to be mounted indoors onto a wall, or it can lay on a flat surface (such as a night stand). If mounting to a wall, use the double-sided tape strips or the screws/wall anchors (both included).

Note (1): Do not mount in an exterior location; the Panic Button is not weather resistant.

Note (2): The Panic Button can transmit up to 150ft. However like all wireless devices, this distance is subject to conditions of the home. The number of walls and appliances between the Panic Button and the location of the Control Center can reduce the signal transmission distance. When selecting a placement, test the panic button at the location before mounting.

### **Mounting the Panic Button onto a Wall (using double sided tape strips)**

Select a suitable location that provides protected, easy access. Be sure to test the device before mounting. Clean all mounting surfaces with a 50/50 mix of water and isopropyl alcohol, and allow to dry. Using the provided double sided tape strips, peel one side and firmly apply to the recessed areas on the back of the mounting plate.

Peel the remaining side of the double sided tape and lightly mount to the wall. Once you are confident with the placement, press firmly to secure to the wall.

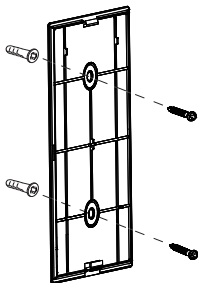
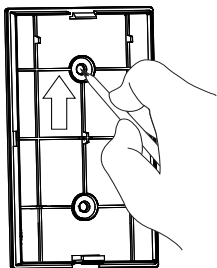
## Mounting the Panic Button onto a Wall (using screws/wall anchors)

– you will need drill, 3/16" or 1/8" drill bit and a flat blade-type screwdriver.

**1.** Remove the top cover from the mounting plate. (See **Removing the Top Cover from the Mounting Plate.**) Set the top cover aside.

**2.** Select a suitable location that provides protected, easy access. Be sure to test the device before mounting. Use the bottom mounting plate as a template. Mark the two holes on the wall for the anchors and/or screws as shown. Please be sure to mark the center of the holes.

**3(a).** If mounting into drywall, use the plastic anchors. Using a 3/16" drill bit, drill holes and insert anchors for a snug fit. Align mounting plate holes to anchor holes, insert screws and screw in until plate has secure fit. **Do not over-tighten screws.**

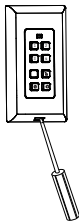




**3(b).** If mounting into a stud or wood surface, use a 1/8" drill bit, drill holes. Align mounting plate holes to drilled holes, insert screws and screw in until plate has secure fit. **Do not over-tighten screws.**

### **Removing the Top cover from the Mounting Plate**

To remove the top cover, locate the snap latch at the bottom of the plate. Using a small flat blade-type screwdriver, gently push in on the latch. The top cover will separate from the mounting plate.



### **Attaching the Top Cover to the Mounting Plate**

To secure top cover onto mounting plate, position cover over mounting plate and gently apply equal pressure to top cover. It will snap securely in place. Check all sides to ensure secure fit.

### **Low Battery Indication**

The Panic Button has a low battery notification circuit. Under normal operation, the battery should last up to 24 months. When the battery reaches a low level, the LED will begin to flash slowly. It will continue to flash until battery is replaced or becomes exhausted.

### **Operating the Panic Button**

Press the red Panic Button anytime you want to activate the alarm siren.

**Note: Once activated, the alarm siren cannot be deactivated from the Panic Button wall plate. The alarm siren can only be deactivated from the Control Center, Keychain Remote or Wireless Keypad.**

## **To Replace a Panic Button**

If the Panic Button is lost or broken, you can either replace it with another Panic Button or remove it completely from the Control Center. To replace a Panic Button (with another Panic Button or any of the Remote transmitters) simply assign the new Panic Button to the specific device number. The new Panic Button will automatically replace the previous Panic Button.

## **To Erase a Panic Button From a Control Center**

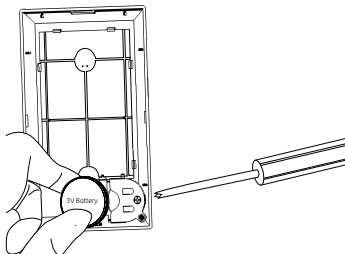
**CAUTION:** Erasing a Panic Button from the Control Center will also erase any sensors in the associated zone. Sensors will have to be added back to the zone (Refer to sensor manual or Control Center manual for specific instructions).

To erase a Panic Button (or any Remote transmitter) from device number location in the Control Center, press and hold the 'Learn' button and the device number at the same time on the Control Center until the Control Center sounds two beeps. Release both buttons.

**\*NOTE:** Some early production Control Center products were designed to allow replacement only. In this situation you will only be able to replace the remote transmitter with another. Contact Tech Support at 800-654-8483 option 4 to determine if your Control Center is an early production model.

## To Replace the Battery

**Note:** The Choice Alert system is 'range dependent', which means a Panic Button located closer to the Control Center may seem to have batteries that last longer than a Panic Button located farther away. As battery power reduces, the transmission distance reduces.



1. Remove the top cover (see **Removing the Top cover from the Mounting Plate**). Slide the battery out from the slot. You may need to push the battery from the back with a small screw driver.
2. Replace the old battery with a new "2032" (3v) battery. Be sure to match battery polarity.
4. Replace top cover.

Description	Battery Type	Battery Life*
Control Center	(4) "AAA"	24 months
Panic Button	(1) "2032"	24 months

\*maximum potential life based upon usage and location

## **FCC Warning**

Any unauthorized changes or modifications to the equipment would void the user's warranty and may conflict with both state and federal laws. The Choice Alert system complies with part 15 of the FCC rules. Operation is subject to the following conditions:

- 1)** The Choice Alert system may not cause harmful interference.
- 2)** The Choice Alert system may accept any interference received including interference that may cause undesired operation.

**NOTE:** This equipment has been tested and found to comply with the limits for a Class B digital device, pursuant to Part 15 of the FCC Rules. These limits are designed to provide reasonable protection against harmful interference in a residential installation. This equipment generates, uses and can radiate radio frequency energy and, if not installed and used in accordance with the instructions, may cause harmful interference to radio communications. However, there is no guarantee that interference will not occur in a particular installation. If this equipment does cause harmful interference to radio or television reception, which can be determined by turning the equipment off and on, the user is encouraged to try to correct the interference by one or more of the following measures:

- Reorient or relocate the receiving antenna.
- Increase the separation between the equipment and receiver.
- Connect the equipment into an outlet on a circuit different from that to which the receiver is connected.
- Consult the dealer or an experienced radio/TV technician for help

## **WARNING!**

### **Risk of personal injury**

- Prolonged exposure to alarm siren may cause permanent hearing loss

### **Battery Warnings!**

- Remove batteries before storing the Alarm or Sensor for extended periods
- Batteries may leak harmful liquids or ignitable materials or explode causing injury and product damage
- Do not mix old and new or other battery types
- Replace all batteries at the same time
- Replace fully discharged batteries immediately

## **Panic Button F.A.Q.'S**

- Q.** I bought a Panic Button and the Control Center will not recognize it. Why?
- A.** First, make sure that the battery is new and has been correctly positioned (matching polarity). Confirm that the Panic Button has been correctly assigned to a device number on the Control Center.
- Q.** If I put the Panic Button on Zone 4 will it still set off the alarm?
- A.** The Panic Button is assigned to a device number instead of a zone. It will sound the alarm when assigned to any of the four device numbers.
- Q.** I've tried several times to erase a Panic Button from the device number memory but it still remains - What can I do?
- A.** If you are unable to completely erase a Panic Button from the device number memory, you may have an older, early production Control Center. Early production versions only allowed for replacement of one remote transmitter with another. Contact Tech Support at 800-654-8483 for any questions.

## **WARNING**

### Limitations of Alarm Products

This product should be tested periodically to make sure it is working properly. The product, if used properly, may reduce the risk of burglary, robbery, or other adverse events. However, JASCO is not an insurer, this product is neither insurance nor a guarantee that such an event will be prevented, and users should protect themselves with proper insurance. JASCO makes no representation that this product cannot be compromised or circumvented, that it will provide an adequate warning, or that it will prevent any personal injuries, property damage, or other losses. Like any alarm product, including expensive commercial systems, it may be bypassed, it is subject to compromise, and it may fail to warn for a variety of reasons, including, but not limited to: improper installation or positioning; improper maintenance; tampering; dead or improperly installed batteries; sensing limitations; component failures; receivers; intrusions may be outside of a product's designed range and certain environmental conditions may impact performance and audible alarm signals may be outside of hearing range, muted by doors, walls, and floors, unheard by deep sleepers or the hearing-impaired, or overwhelmed by other sounds.



is a trademark of the General Electric Company and is used under license to Jasco Products Company LLC, 10 E. Memorial Road, Oklahoma City, OK 73114.

This Jasco product comes with a 1 year limited warranty. Visit [www.jascoproducts.com](http://www.jascoproducts.com) for details.